

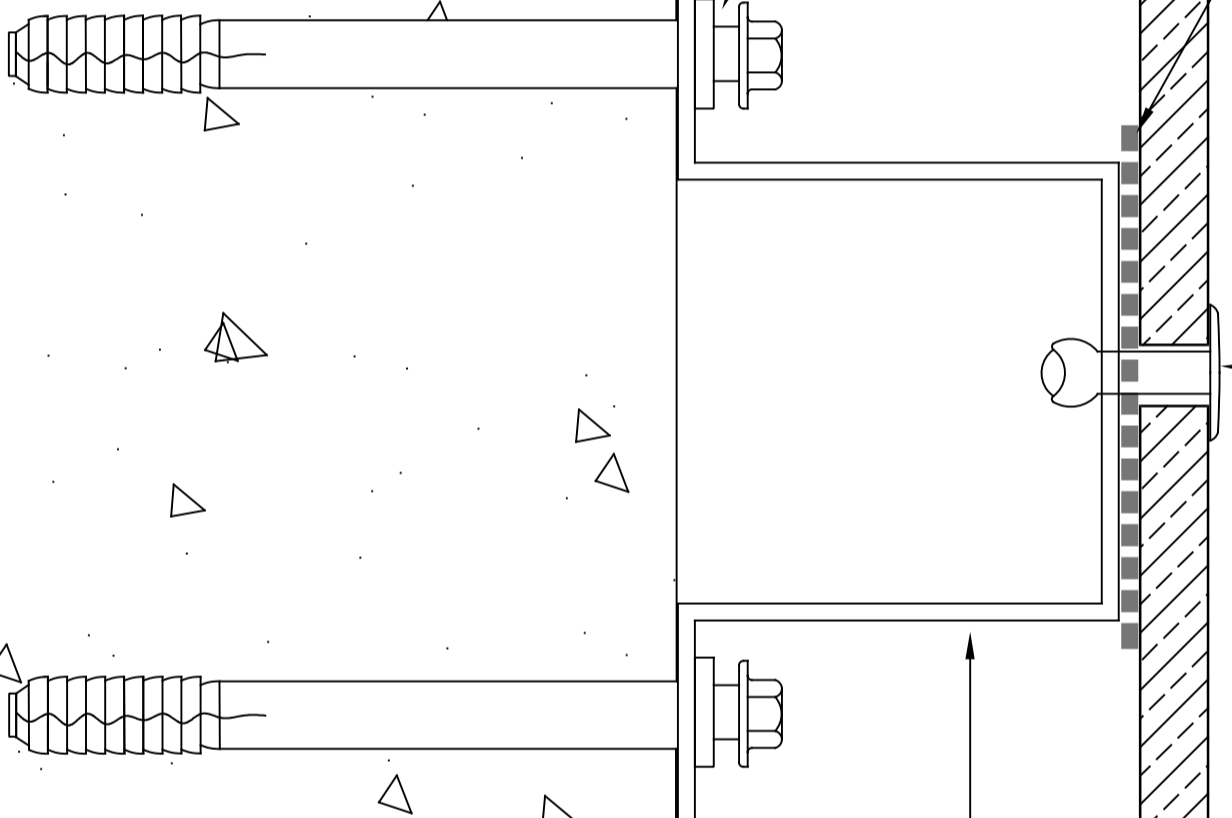
VITRAFIX A4 STAINLESS RIVET,
4.8X20MM OR 4.8X26MM AS PER
SPECIFIC PANEL REQUIREMENT

VITRAFIX VFRT55/1.0 EPDM
RAIL TAPE

CERAMAPANEL 8MM, 10MM OR 12MM AS PER SPECIFICATION

FIXING TO MASONRY BY
CERTIFIX LTD

VITRAFIX VF2 TOP-HAT,
— 50X50X2MM, GALVANISED
STEEL



Fairview Europe Ltd t/a Valcan
Dunball House, Unit N Woodlands
Bristol Road, Bridgwater, TA6 4FJ
tel: 0844 800 7131
email: enquiries@valcan.co.uk

THESE DETAILS ARE LIMITED TO THE GENERALISED DESIGN SPECIFICATION FOR THE PRODUCTS SHOWN AND ARE INTENDED **POURSE** BY A TECHNICALLY SKILLED PERSON ONLY - ANY USE OF THE SAME IS AT THEIR OWN DISCRETION AND RISK.

FILE NAME: RivetFix2CP-VertJoint.dwg

SCALE: 1 : 2 @ A4

UNLESS OTHERWISE SPECIFIED, DIMENSIONS ARE IN MILLIMETRES

ANGLES $\pm 0.1^\circ$

2PL $\pm 0.01\text{mm}$

3PL $\pm 0.001\text{mm}$

DRAWN:	GB
CHECKED	.
ENG APPR	.
MGR APPR	.

DRAWING TITLE

CERAMAPANEL RIVET FIX
TOP-HAT INSTALL
INTERMEDIATE SUPPORT

DATE	SEPTEMBER 2022
SHEET	2 OF 2
DRAWING No.	REV.
CRF-TH-2	1/1