



V A L C A N

The Defining Standard



VALCAN: COMPANY & PRODUCT OVERVIEW

Delivering premium A1 cladding systems and expertise for architects, contractors and developers





Pictured: Bradstowe House, Harrow. VitraDual® - Colours: Cornish Granite and Riddle Grey.



OUR VISION

To lead the façade industry as an innovative and proactive organisation, consistently delivering non-combustible façade solutions, renowned for excellence of product, product support and superior customer service – the defining standard.



OUR MISSION

To be the market leader in non-combustible façades for high-rise buildings, through design and supply of A1 and A2 rated rainscreen cladding systems, that are easy to buy and fast to install.



OUR VALUES

Our values go beyond mere buzzwords. They are the fundamental principles that influence our team's actions and decisions throughout the organisation that helps us to deliver exceptional results that exceed expectations.

CONTENTS

Who We Are / History	4
Why Choose Valcan / Our Strengths	5
Complete Cladding Systems	6-11
Products	12-27
– ProcellaPro® A1 Fibre Cement Building Board	12-13
– VitraFix® Cladding Subframe Systems	14-15
– VitraDual® A1 Aluminium Cladding Panels	16-19
– Ceramapanel® A1 Fibre Cement Cladding Panels	20-23
– Everlap® A2 Cladding Wood Grain Planks	24-25
– Frontek® A1 Extruded Porcelain Cladding panel	26-27
Case Studies	29-43
Sustainability	44-45
CPDs and Tool Box Talks	46

VALCAN, YOUR TRUSTED PARTNER IN A1/A2 NON-COMBUSTIBLE CLADDING SOLUTIONS



4 | VALCAN.CO.UK

WHO WE ARE

Valcan is the trading name of Fairview Europe Ltd and we are part of the Fairview global family. Valcan is a developer and manufacturer of rainscreen cladding systems working with clients, insurers, architects and contractors.

We deliver fully tested non combustible A1 /A2 (A2-s1,d0) certified solutions, paired with reliable and technically assured customer service.

With over 20 years of experience in the façade industry through Fairview's global network, we have established a leading position in the market and are now the preferred company by Architects, Contractors and Fabricators.

HISTORY

Valcan initiated its distribution of Vitrabond A2 Aluminium Composite material to the construction industry during the early 2000s. This effort was made possible through the unwavering support of Fairview Architectural, Australia - a partnership that remains robust to this day.

With a solid background in the façade industry spanning over two decades, Fairview Architectural initially catered to the rainscreen market with their flagship product, Vitrabond.

Presently, we offer a diverse range of over 10 products, along with a range of complete cladding systems. Our commitment to providing exceptional customer service drives us to continuously improve our processes and offerings.

HUGE STOCKS. EXPERT KNOWLEDGE. FAST DELIVERY.

In excess of 1 million m² of cladding materials supplied around the world per annum.



WHY CHOOSE VALCAN?

At Valcan, we do not design or install products ourselves. Instead, we have a network of trusted partners we collaborate with to ensure your project is completed to the highest standards of quality and safety. These partners, selected for their expertise, knowledge, and ability to deliver outstanding results, include designers, fabricators, and distributors sharing our commitment to quality, safety, and innovation.

We also have a network of installer partners, carefully chosen for their professionalism, reliability, and commitment to safety. Trained to install our products, they ensure your project is completed to the highest standards.

OUR STRENGTHS

Valcan is renowned for its exceptional dedication to providing top-tier, secure, and innovative solutions in the façade industry. Our principal products and systems boast non-combustibility, earning A1 /A2 fire ratings and setting the gold standard for rainscreen systems.

This commitment to quality is propelled by rigorous research and development, ensuring that every solution we deliver is expertly tailored to cater to each project's unique needs and demands. Whether you're undertaking a new build or recladding projects, Valcan guarantees optimal performance, safety, and integrity in every product.

We take pride in being a supportive partner to our customers, guiding them through each project phase and helping them achieve their objectives.

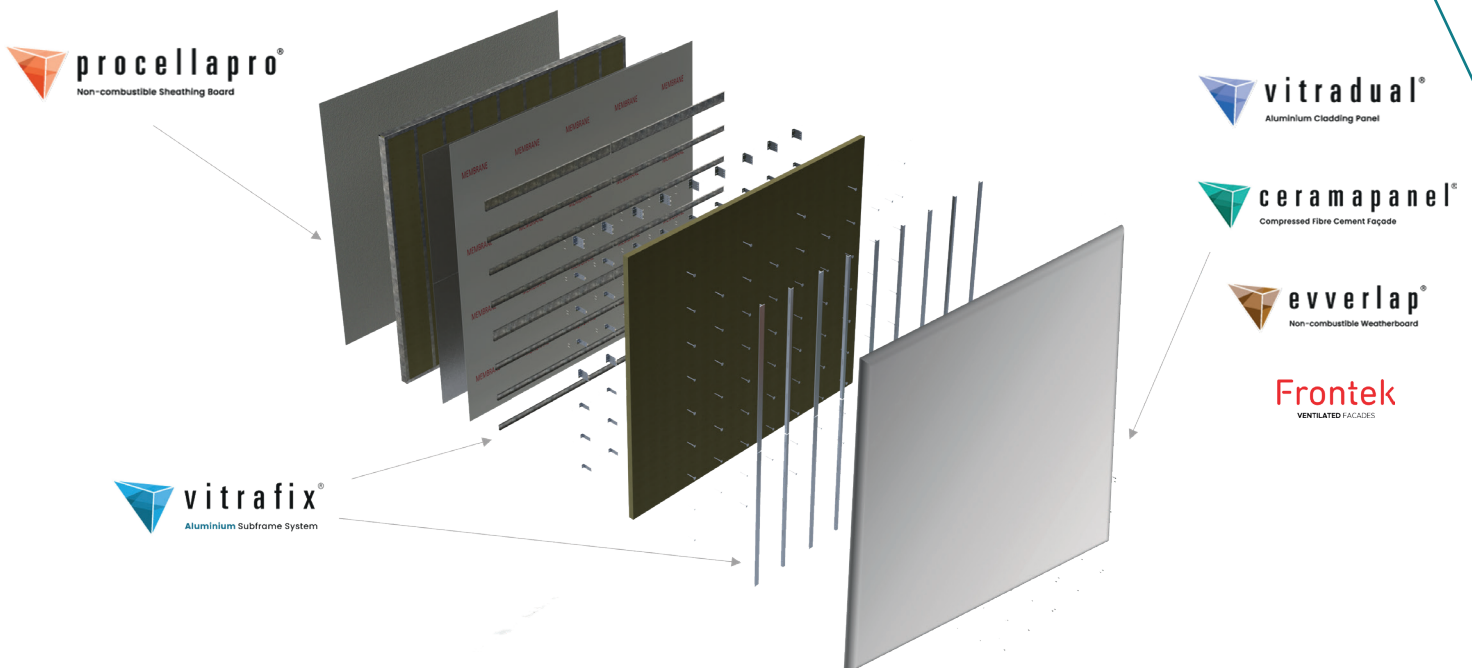


COMPLETE, ALL-IN-ONE CLADDING SYSTEMS

For over two decades, Valcan has been the trusted choice for clients seeking contemporary and natural-looking cladding panels. With an unwavering commitment to quality, we have consistently expanded our product range to meet evolving design demands.

Today, we take immense pride in offering a diverse selection of complete cladding systems, encompassing every element needed to achieve a flawless building envelope. Our systems include components, fixing assemblies, and more, tailored for both new build and recladding projects.

At Valcan, we understand the unique requirements of construction professionals. Our comprehensive approach integrates critical components, addressing diverse needs while adhering to the principles of the Building Safety Act 2022 and the Golden Thread of information. Compliance and building safety are at the forefront of everything we do.





STREAMLINED SOLUTIONS FOR EFFICIENT AND SUSTAINABLE CLADDING PROJECTS

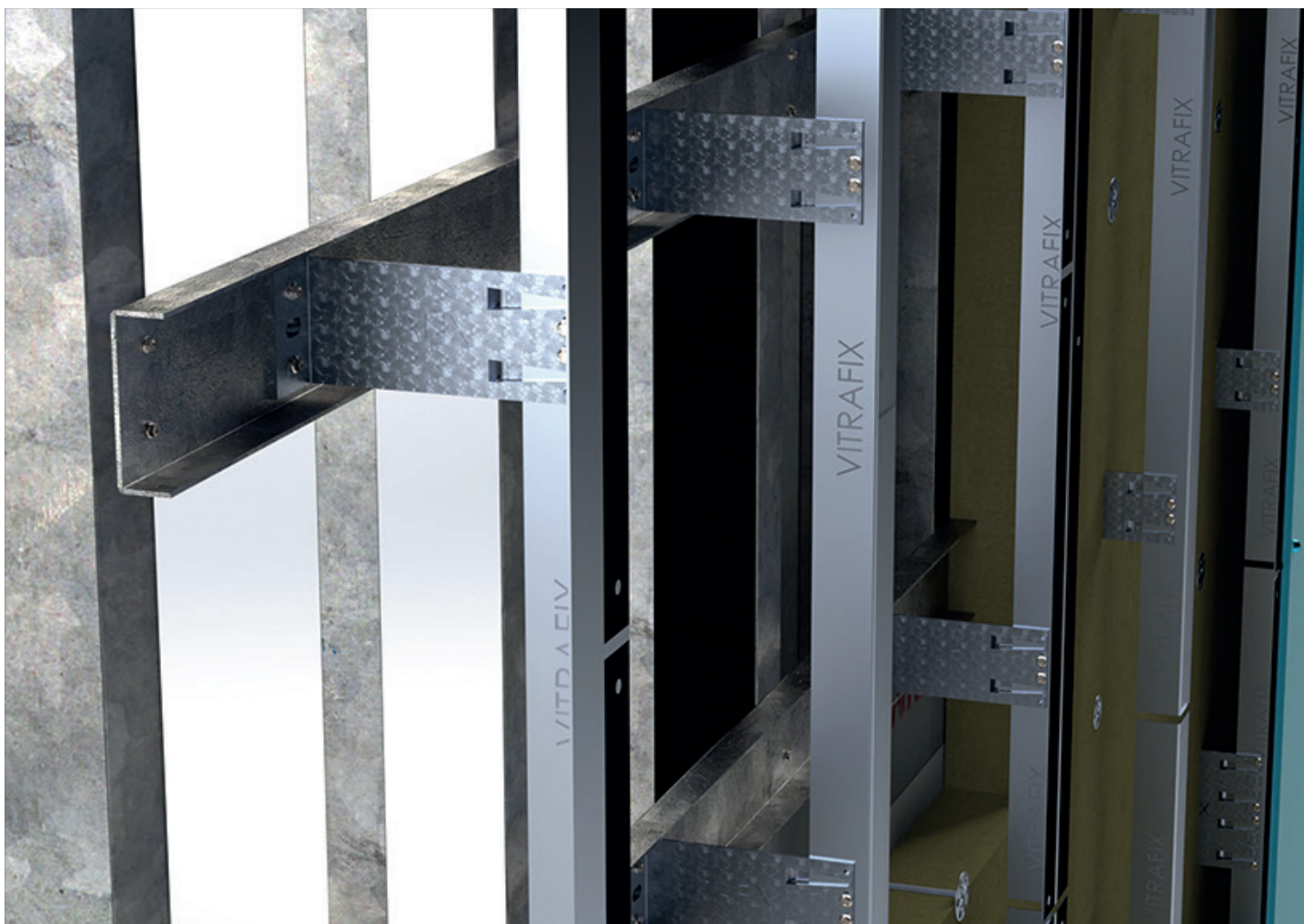
We have collaborated with industry-leading suppliers to deliver streamlined solutions for efficient and sustainable cladding projects. Our focus is on enhancing efficiency and expediting installation time-lines, while also minimising the carbon footprint of each project in line with our sustainability goals.

With our unified approach, we provide a complete range of cladding components, from panels and subframe systems to insulation, masonry fixings, breather membranes, fire barriers, and specialist tools. Rest assured, our rigorously tested products and fully warranted system ensures a seamlessly coordinated, reliable, and centrally managed approach to delivering safe cladding solutions.

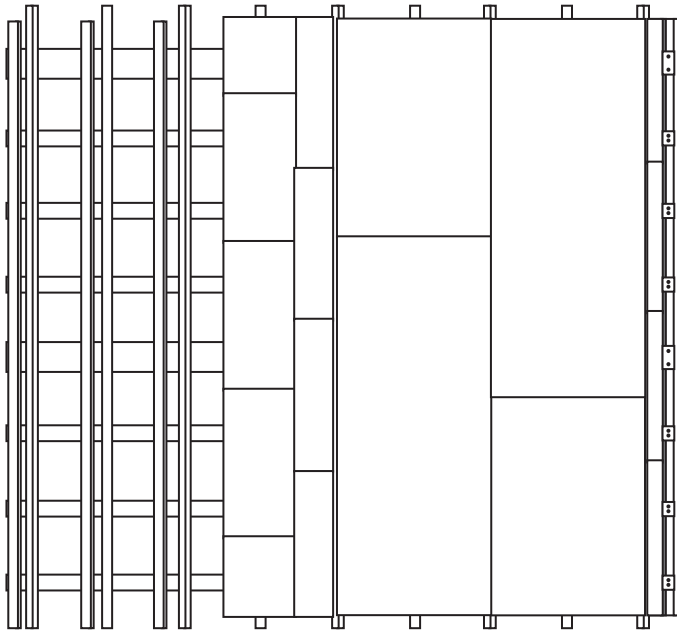
INTRODUCING OUR COMPLETE CLADDING SYSTEMS

Our complete cladding systems are designed to work with any project, offering a huge range of benefits including:

- ▲ **Simplicity and Efficiency:**
Streamlined specification with NBS Chorus and centralised project management simplifies the process, saving you time, resources and money.
- ▲ **Robust Safety and Durability:**
Compliance with stringent safety standards. With high-grade components, Valcan products are tested by organisations such as the CWCT and BBA to ensure maximum safety and longevity.
- ▲ **Aesthetic Flexibility:**
Tailored solutions designed around your project's unique requirements, providing an architectural style that complements the intended design vision.
- ▲ **Sustainability and Energy Efficiency:**
Our systems reduce environmental impact and enhances energy efficiency.
- ▲ **Ease of Maintenance and Longevity:**
Durable and low-maintenance systems offer an appealing finish that lasts.
- ▲ **Warranty and Peace of Mind:**
A comprehensive full system warranty for up to 30-years, with all components sourced from trusted suppliers which assures long-term peace of mind.



SUITABLE FOR ANY CONSTRUCTION PROJECT.



Our complete systems are suitable for any building type. Our products and systems are often chosen for medium to large scale projects where we work closely with clients and their architects, installers distributors and construction professionals.

Our complete cladding systems are as suitable for a number of building types including:

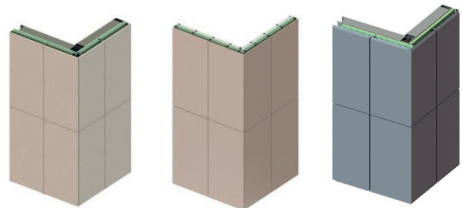
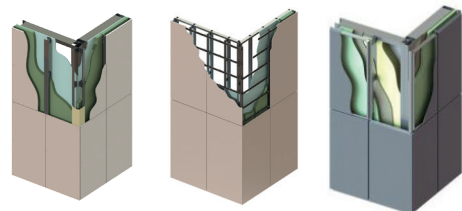
- ▲ Commercial Buildings
- ▲ Educational Institutions
- ▲ Healthcare Facilities
- ▲ Residential Buildings
- ▲ Industrial Buildings
- ▲ Public Buildings
- ▲ Hospitality Buildings
- ▲ Sports Facilities

FIXING ASSEMBLIES

Choose from a wide variety of fixing types including:

- ▲ Face-Fix
- ▲ Secret-Fix
- ▲ Secret-Fix Hook-On
- ▲ Interlocking Planks
- ▲ Cassette-Fix
- ▲ Discrete-Fix
- ▲ Standing Seam
- ▲ Stud-Weld

If you're looking for other options or a completely customised fixing assembly feel free to get in contact with us.



COMPLETE SYSTEMS: KEY COMPONENTS



Valcan | ProcellaPro® A1 Sheathing Board

Classified A1, non combustible and made from fibre cement, ProcellaPro® provides a solid structural base, improves energy efficiency and sound dampening.



Valcan | VitraFix® Subframe System

Choose between non combustible options of aluminium or Magnelis steel with fixings included. This forms a strong, safe subframe system securing the cladding panels.



Scan to visit the product page





CHOOSE FROM OUR FLAGSHIP CLADDING PANELS TO PROVIDE THE DESIRED FINISH:



Valcan | VitrDual® A1 Aluminium (Page 16)

Offers a crisp and sleek, aesthetically pleasing appearance. It's cost-effective and A1* rated.



Valcan | Ceramapanel® A1 Fibre Cement (Page 20)

Fibre cement façades are suited to modern commercial, residential and industrial buildings where a natural façade is needed.



Valcan | Everlap® A2 Fibre Cement (Page 24)

Fibre cement weatherboard uses cellulose fibres for additional strength and comes in either a smooth face or a teak wood grain effect.

Frontek

VENTILATED FAÇADES

Frontek® Extruded Porcelain A1 Porcelain (Page 26)

Extruded porcelain rainscreen cladding panels offering the appearance of natural stone and timber façades.



procellapro[®]

Non-combustible Sheathing Board

ProcellaPro[®] is a high-performance building board or sheathing board that is A1 rated with a PCS value of 0.85MJ/kg.



PROCELLAPRO BENEFITS

- ▲ Non-combustible – A1 rated to BS EN 13501-1
- ▲ Panels pre-squared
- ▲ High stock holdings
- ▲ Long Lasting
- ▲ Cutting – Can be cut and shaped easily on-site
- ▲ Short lead times and fast installation time frames
- ▲ High Density - High pull-out rating / Structural Strength 1250 (+/- 50) kg/m³
- ▲ Sound dampening benefits
- ▲ Fast delivery
- ▲ Insulation fixings can be screwed into the panel
- ▲ NBS Chorus - easily add ProcellaPro[®] into your specification
- ▲ Complete System - Can be purchased separately or as part of a complete non-combustible A1 cladding system



A1 rated to
BS EN 13501-01



Tested to BS8141
& BR135 compliant



Specify this product
online with NBS Chorus



Recyclable

COMPLIMENTARY SAMPLE

Simply send us an email or call to request a sample to be sent to you.



Scan to visit the
product page



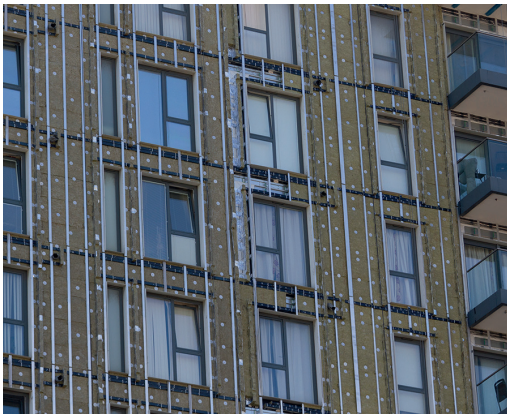
Pictured: Burrells Wharf, London. Featuring ProcellaPro® and VitraDual®



vitrafix®

Framing and Accessories

VitraFix® is a modular and high-quality subframe system which provides unparalleled safety and support for rainscreen cladding panels. Choose from high grade aluminium or Magnelis steel.



VITRAFIX BENEFITS

- ▶ Non-combustible
- ▶ Lightweight – VitraFix® is incredibly rigid and lightweight and is also easy to install
- ▶ Versatile – VitraFix® has a standard range of brackets but can be offered in custom sizes to suit your specific requirements
- ▶ High durability – VitraFix® uses highly durable grades of aluminium for peace of mind and longevity
- ▶ Reduces Thermal Bridging
- ▶ Cost effective – VitraFix® is a cost-effective solution for façade installation
- ▶ Project specific calculations – The VitraFix® system comes with project specific details where and when required
- ▶ Coated profiles – When required, rails can be coated to 'black out' joints
- ▶ NBS Chorus – easily add VitraFix® into your specification
- ▶ Complete System – Can be purchased separately or as part of a complete non-combustible A1 cladding system



A1 rated to
BS EN 13501-01



Tested to BS8141 &
BR135 compliant



Recyclable



BBA (Magnelis Steel)

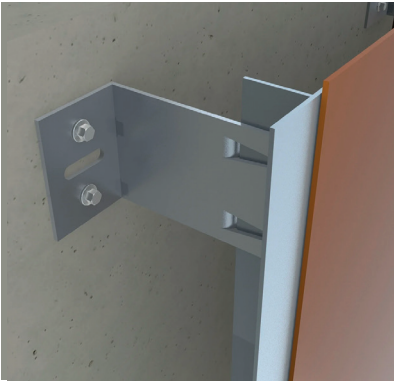


Specify this product
online with NBS Chorus



Scan to visit the
product page

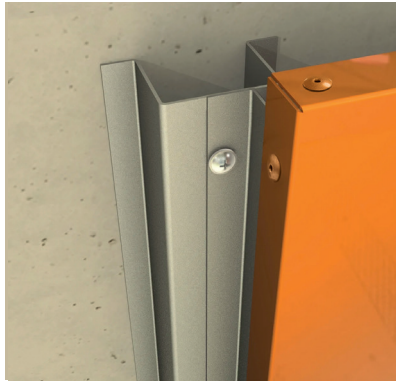
VITRAFIX® VF1



VF1 system uses helping brackets installed against the wall and then aluminium profiles.

VF1 system is used where insulation is required externally and panels are to be installed as face fixed or cassette panels.

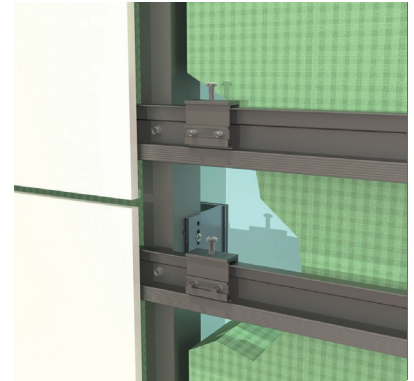
VITRAFIX® VF2



VF2 system comprises of top-hats and Z angles formed from aluminium or steel depending on project requirements.

VF2 is used where a façade has no requirement for external insulation with face fixed or cassette panels or when the helping hand brackets do not line up with SFS studs within the wall.

VITRAFIX® VF3



VF3 uses horizontal C channel rails and brackets attached to a VF1 or VF2 sub carrier frame and is suitable for fibre cement, stone or laminate type products.

VITRAFIX® SOFFIT SYSTEM



The VitraFix® Soffit System offers a customisable solution for your soffit needs. The drop can be adjusted to meet your specific requirements and the system is composed of brackets made from either 5251/H22 or 6063/T6 grade aluminium.

VITRAFIX® VFM



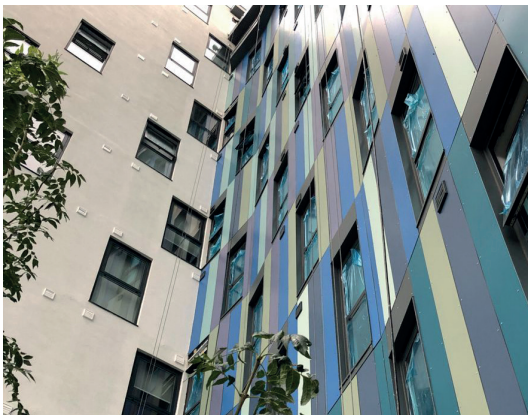
VFM is a Magnelis steel carrier system designed for use as either a standard helping hand style system, or more commonly a floor spanning carrier system. It has a much higher melting point than a standard aluminium systems; 1425–1540°C vs 660°C. BBA Certified.



vitradual®

Non-Combustible Cassette Cladding

Elevate your building's exterior with VitraDual® - our A1 rated solid aluminium rainscreen cladding. Combining style and safety, VitraDual® comes in a variety of colours and finishes, ensuring a modern and sleek look for any project.



VITRADUAL BENEFITS

- ▲ Non-combustible – A1 rated to BS EN 13501-1
- ▲ CWCT and BBA* Accredited
- ▲ CCPI verified
- ▲ Lightweight – VitraDual® is incredibly rigid and lightweight and is therefore easy to install
- ▲ Versatile – VitraDual® can be custom designed into a wide range of shapes and dimensions as well as able to be perforated or curved in some applications making it a versatile design choice
- ▲ Maintenance – easy to maintain compared to polyester-based coatings
- ▲ High Durability – VitraDual® panels are highly durable and impact resistant. They can be used effectively in high traffic areas
- ▲ Paint System – VitraDual® only use the highly recognised PVDF KYNAR 500 or FEVE paints known for their high durability, providing the optimum resistance to weather and industrial pollutants
- ▲ Warranty – VitraDual® has up to a 30-year warranty
- ▲ Extremely Flat – Low Surface Stress
- ▲ NBS Chorus - easily add VitraDual® into your specification
- ▲ Complete System - Can be purchased separately or as part of a complete non-combustible A1 cladding system

*BBA Accreditation for 3mm VitraDual. Vitradual 3mm is manufactured by Valcan and is available with BBA certification when produced at BBA-certified production facilities. *Certification requirements must be specified at enquiry and order stage*

16 | VALCAN.CO.UK



Scan to visit the product page



Tested to BS8141 & BR135 compliant



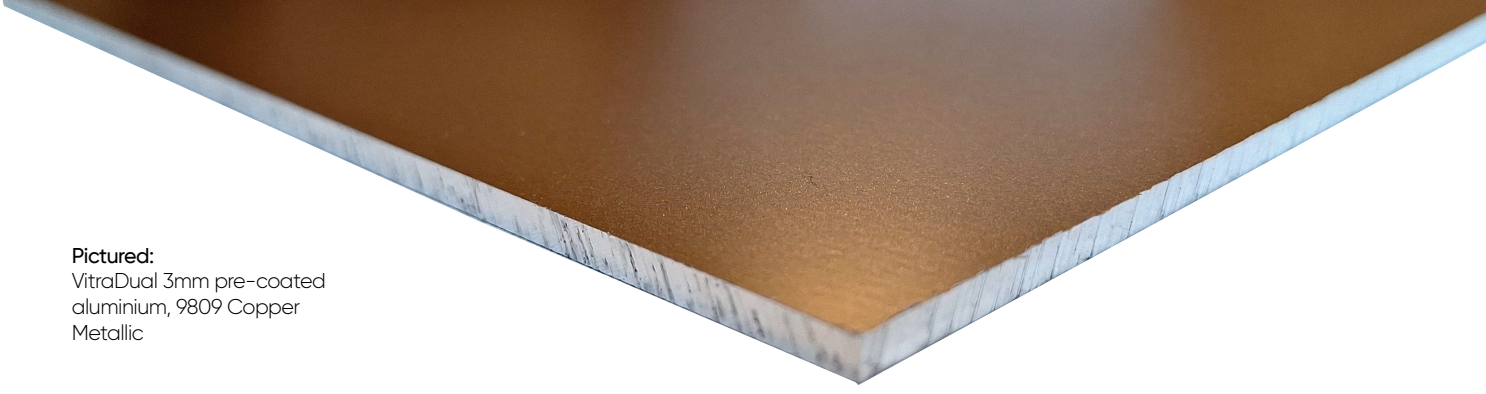
Specify this product online with NBS Chorus



Recyclable



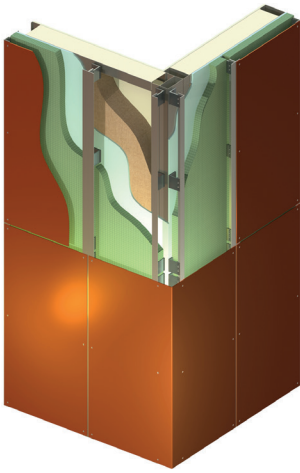
Environmental Product Declaration



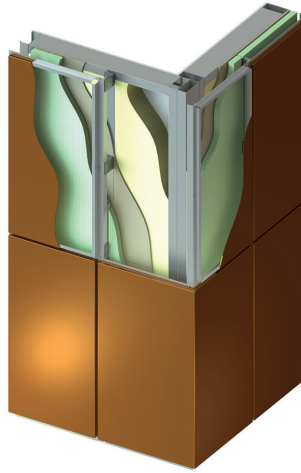
Pictured:
VitraDual 3mm pre-coated
aluminium, 9809 Copper
Metallic

POPULAR FIXING TYPES

Face-Fix Assembly



Cassette-Fix Assembly



More fixing systems are available, including interlocking planks and standing seam effect. Please contact the sales team for more information.

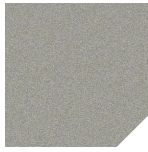


EXPRESS RANGE

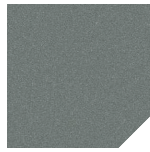
This range are held as standard stocked colours available for short delivery lead times and lower minimum order quantities.



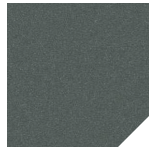
9601
Silver
Metallic



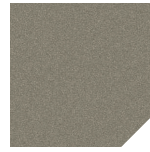
9205
Champagne
Metallic



9134
Smoke Silver



9137
Dark Grey
Metallic



9308
Bronze
Metallic



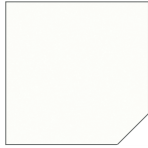
4150
Gold
Metallic



9809
Copper
Metallic



8400
Warm Oak



9902
White



9210
Frost White



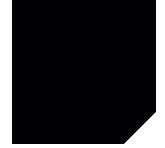
9304
Cool Grey



9504
Cruze Grey



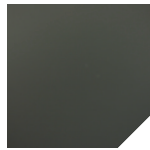
1255
Riddle Grey



9130
Enigma
Black

NON EXPRESS RANGE

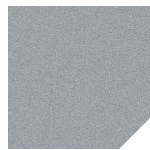
This range of colours consists of standard but non-stocked colours, lead times and minimum orders quantities may apply, contact us to discuss.



10008
Seal Grey



1510
Fresh Green



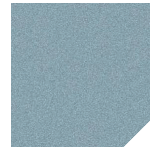
9701
Silver Ice
Metallic



4240
Sunshine
Grey



7085
Chromatic
Gold Dust



4420
Blue Grey
Metallic



7090
Chromatic
Ice



7450
Chromatic
Diamond
Purple



7550
Jungle
Green



7690
Chromatic
Ancient Red



Golden Ash



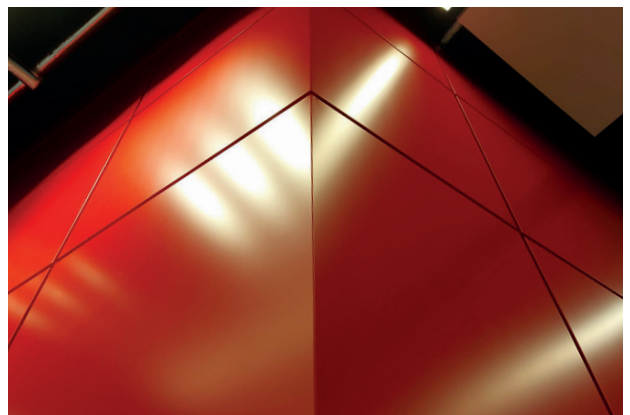
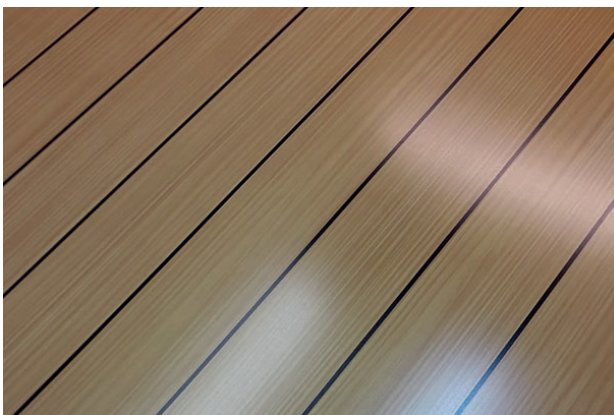
Soft Pine



Pacific Yew



Teak



NON EXPRESS RANGE - CONTINUED



8805
Dark
Kingwood



Dark Teak



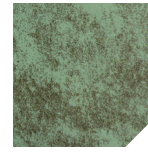
5362
Corten 3



5363
Corten 4



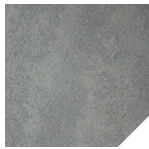
5571
Patina
Green 2



5570
Patina
Green



6003
Concrete 3



6002
Concrete 2



6001
Concrete 1



1005
Snow White



RAL
7026
Granite Grey



3221
Bleached
Mint



3032
Mint Green



6027
Light Green



1599
Forest Green



1420
Reef Blue



10002
Lapis Blue



10001
Midnight
Blue



10007
Electric Blue



1125
Cool Yellow



1135
Sunshine
Yellow



1677
Poppy Red



1686
Power Red

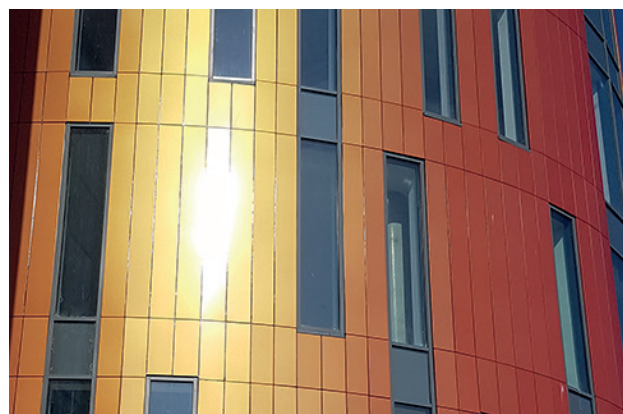


Any RAL
Colour

COMPLIMENTARY SAMPLES

Should you find a range of colours suitable for your project you can order up to three samples sent directly to you free of charge. Simply send us an email, call or request the samples online.

If you require to see a larger range of colours or finishes contact us to arrange an appointment with one of our façade experts. They'll be happy to meet you either on-site, or at your premises.





ceramapanel®

Compressed Fibre Cement Facade



Upgrade your building's style and safety with our non-combustible fibre cement rainscreen cladding. Enjoy a seamless combination of beauty and protection, with a variety of textures and colours to choose from.



CERMAPANEL® BENEFITS

- ▲ Non-combustible – A1 rated to BS EN 13501-1 and A2 rated painted
 - ▲ CWCT tested
 - ▲ CCPI verified
 - ▲ Available as a complete cement cladding system with carrier
 - ▲ Cost effective
 - ▲ Short lead times and fast installation time frames
 - ▲ Panels supplied pre-squared
 - ▲ Easily cut and installed on-site
 - ▲ Maintenance – Long lasting, Low maintenance panels
 - ▲ Finish – can be finished off-site for easy and efficient installation
 - ▲ High durability – High strength and environmental durability
 - ▲ Through coloured with wide colour range and finishing options
 - ▲ Sound dampening benefits
 - ▲ Graffiti resistant when coated with acrylic treatment (Natural+ range)
 - ▲ NBS Chorus - Add Ceramapanel® into your specification
- Complete System - Can be purchased separately or as part of a complete non-combustible A1 cladding system.

20 | VALCAN.CO.UK



Scan to visit the product page




ASSESSED PRODUCT INFORMATION
003100070/0626

VitraDual 5754 Grade products



Tested to BS8141 & BR135 compliant



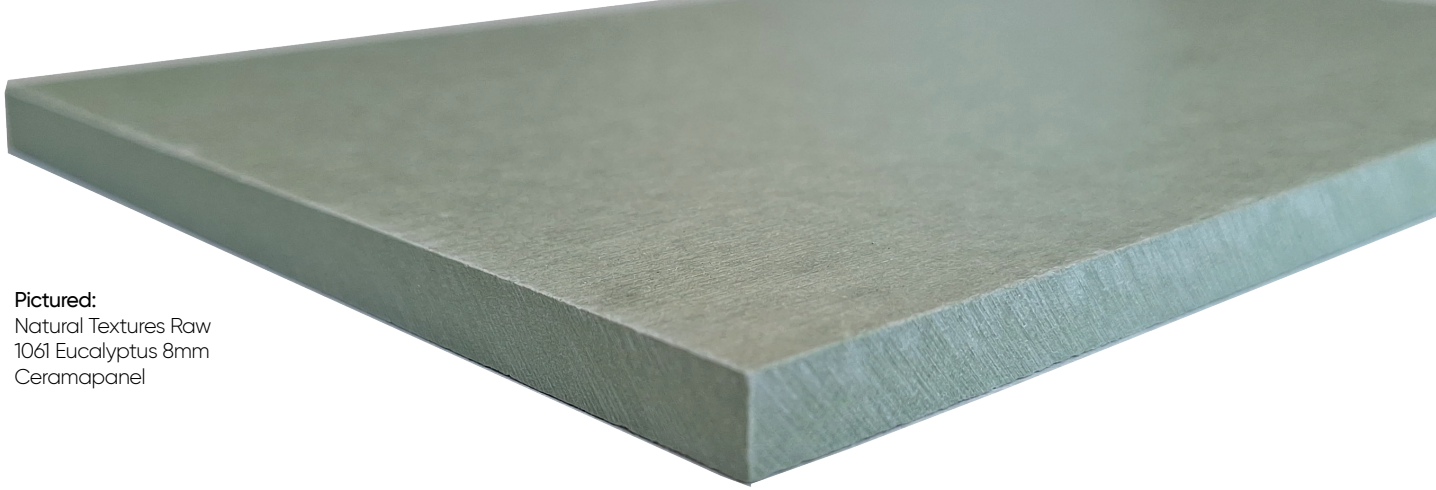
Specify this product online with NBS Chorus



Recyclable



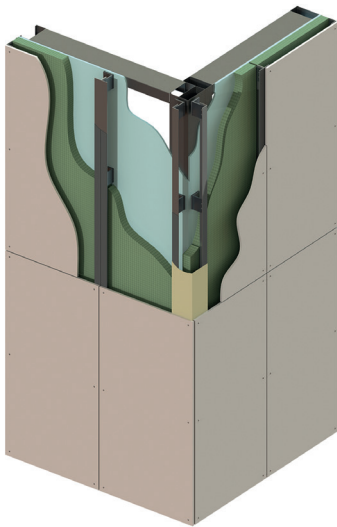
Environmental Product Declaration



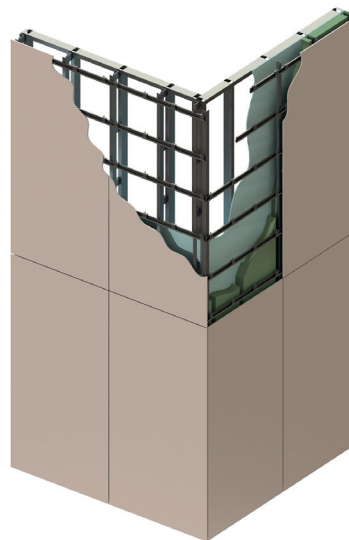
Pictured:
Natural Textures Raw
1061 Eucalyptus 8mm
Ceramapanel

POPULAR FIXING TYPES

Face-Fix Assembly



Secret-Fix Assembly



More fixing systems are available, please speak to our sales team for more information.



Pictured:
University of Exeter, East Park.
16,000m² Ceramapanel[®]
in Bleached Cotton.

NATURAL COLOURS

Ceramapanel Natural range of colours are through coloured panels that resemble natural/earth tones, these boards may contain white flecks which is a natural feature and add to the aesthetic of the panel.

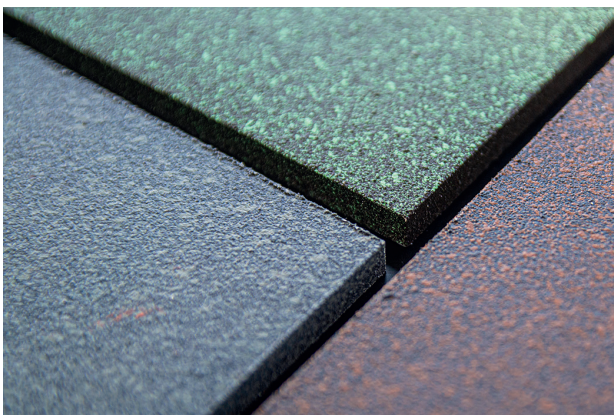
Natural range colours are available in the following colours:



**High MOQ*

NATURAL+ Colours

Ceramapanel Natural+: Includes an anti-graffiti coating which gives a slight shine and much richer tone of colour:



FINISHES / TEXTURES

Ceramapanel textured range offers a very subtle but effective dimension to an already natural finish for that little extra uniqueness.



Sandblasted



Touch



Shot Sawn



Raw



Lines



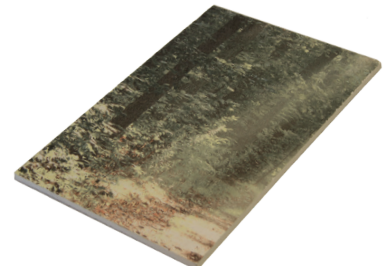
Groove



Painted A1



Painted A2



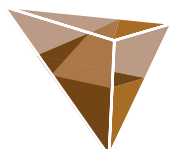
Printed A1

COMPLIMENTARY SAMPLES

Should you find a range of colours suitable for your project you can order up to three samples sent directly to you free of charge. Simply send us an email, call or request the samples online.

If you require to see a larger range of colours or finishes you can arrange an appointment with one of our façade experts. They'll be happy to meet you either on-site, or at your premises.





everlap®

Non-combustible Weatherboard

Our non-combustible fibre cement weatherboard is brilliantly designed to mimic teak wood grain with a distinct raised grain finish. Styled as plank-style boards, they offer an authentic feel without compromising on safety or durability.



EVERLAP BENEFITS

- ▲ Non-combustible – A2-s1,d0 fire classification
- ▲ Cost effective
- ▲ Planks - Wood Effect (Texture - Raised Grain)
- ▲ Maintenance – Long lasting, Low maintenance panels
- ▲ Cutting – Can be cut and drilled easily on-site
- ▲ Highly resistant to pests and rot
- ▲ Long-life product
- ▲ Colours and finishes – a wide range including custom options
- ▲ Lightweight – Easy to transport
- ▲ Fabrication – Can be cut and shaped easily on-site
- ▲ Various size thickness options – 10 mm and 12 mm
- ▲ NBS Chorus – easily add Everlap® into your specification
- ▲ Complete System – Can be purchased separately or as part of a complete non-combustible cladding system.



A2-s1,d0 rated to
BS EN 13501-01



Specify this product
online with NBS Chorus



Recyclable



Scan to visit the
product page

SOLID COLOURS

Everlap panel boards offer a wide range of solid colours to choose from, making it easy to find the perfect hue for your next project.

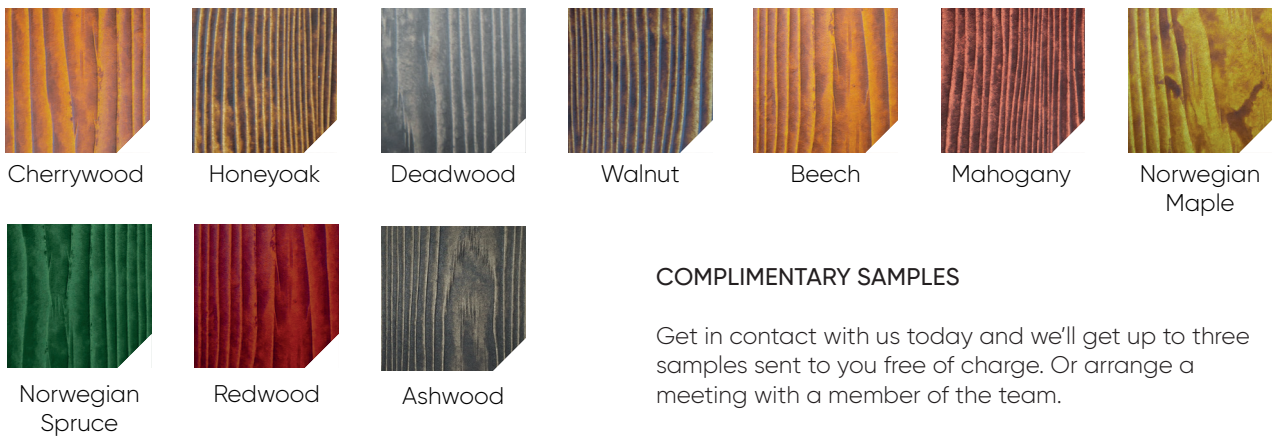
Solid range colours are available in the following finishes:



WOOD STAINED COLOURS

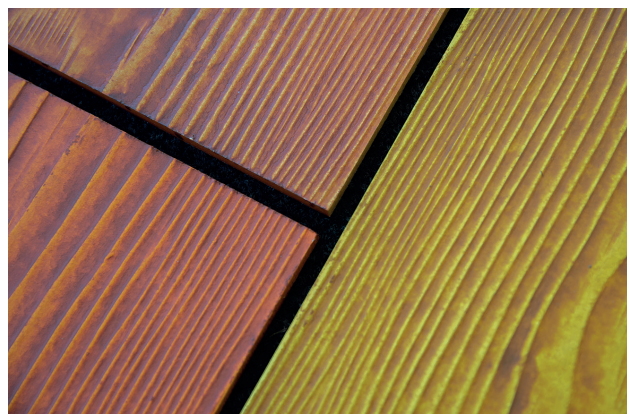
Everlap is available in a wide range of wood stained colours, offering a natural look and feel that will last for a very long time.

Wood stained colours are available in the following colours:



COMPLIMENTARY SAMPLES

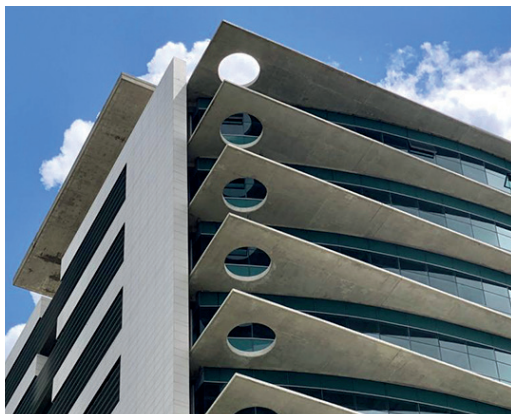
Get in contact with us today and we'll get up to three samples sent to you free of charge. Or arrange a meeting with a member of the team.



Frontek

VENTILATED FACADES

Frontek® is an A1 rated, non-combustible Extruded Porcelain Cladding panel. Cost-effective, lightweight and robust, Frontek® is suitable for use in modern commercial and residential buildings where a natural or stone façade is desired. The panels are secretly installed and can be used in all modern construction types.



FRONTEK BENEFITS

- ▲ Non-combustible – A1 rated to BS EN 13501-1
- ▲ High strength and environmental durability
- ▲ Sound dampening benefits
- ▲ Wide range of finishes to mimic natural stone façades
- ▲ Long lasting, low maintenance panels
- ▲ Available as a complete cladding system with carrier
- ▲ Cost effective
- ▲ Short lead times and fast installation time frame
- ▲ Available in more than 80 finishes including textured and polished
- ▲ XXL Panels available on some finishes at 3000mm
- ▲ NBS Chorus – easily add Frontek® into your specification
- ▲ Complete System – Can be purchased separately or as part of a complete non-combustible A1 cladding system



A1 rated to
BS EN 13501-01



Specify this product
online with NBS Chorus



Environmental
Product Declaration



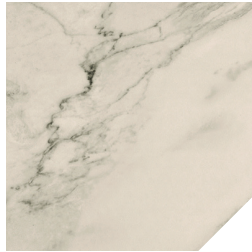
Scan to visit the
product page

COLOURS AND FINISHES

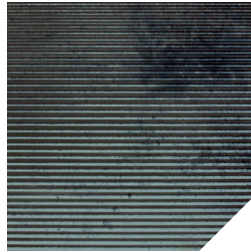
Frontek extruded porcelain façade panels are available in a wide range of finishes that mimic the look and feel of wood, stone and metallic panel types:



Textured



Nature



Metallic



Naturline Colours



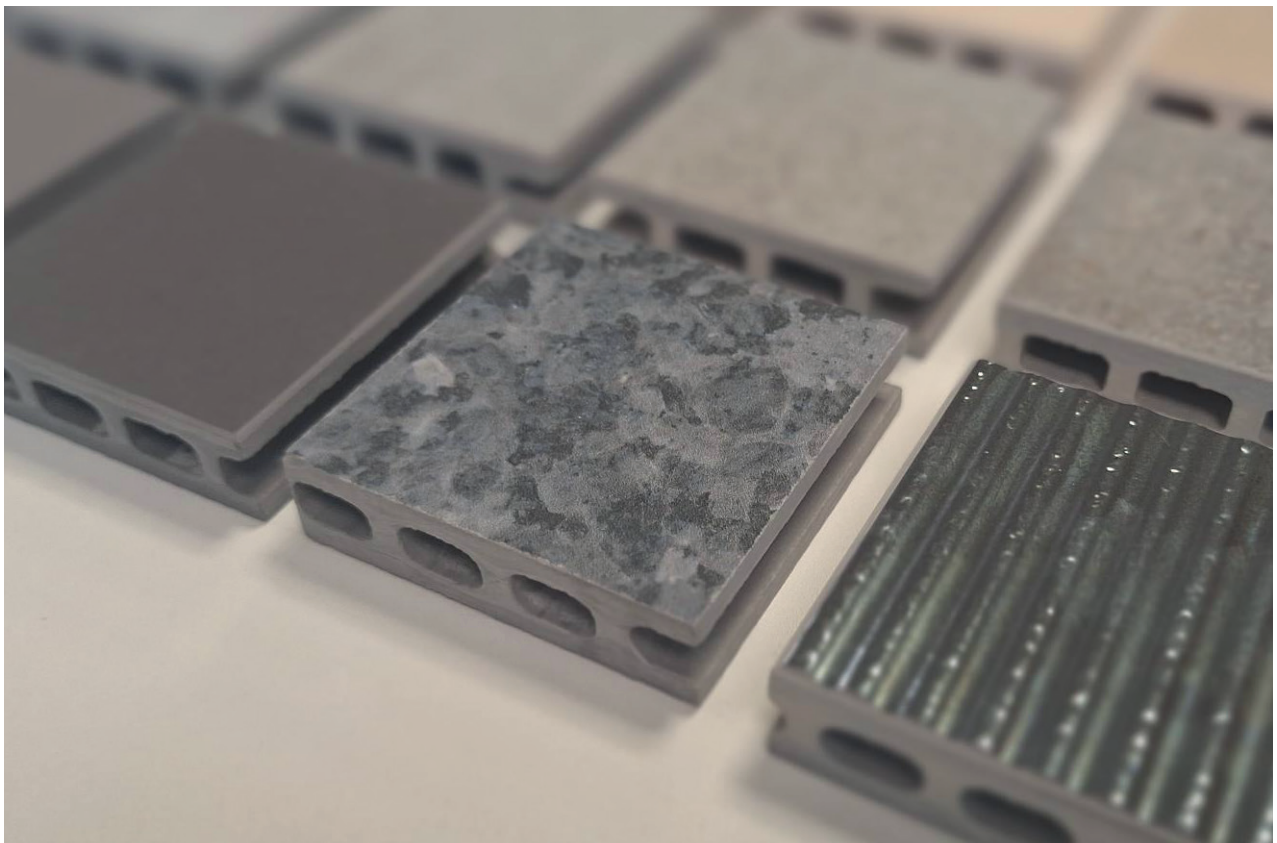
Stonecreate colours



Woodcreate Colours

COMPLIMENTARY SAMPLES

Get in contact with us today and we'll get up to three samples sent to you free of charge. Or alternatively, arrange a meeting with one of the Valcan team.





Pictured: Denning Point, London | VitraDual®

CASE STUDIES

Valcan is proud to be the supplier of non combustible rainscreen cladding for some of the best development projects in the UK and Europe. Our products are known for their reliability, and our customers can count on our first-rate customer support and after-care.

By choosing Valcan, you can be confident that you'll be using a product that meets the highest safety standards. And with our wide range of colours and styles, you can also create a uniquely stylish building that will stand out from the crowd. If you're looking for a non combustible rainscreen cladding solution that you can trust, look no further than Valcan.



CASE STUDY

EXETER UNIVERSITY, EAST PARK

PRODUCTS:	Ceramapanel® - A1 Fibre Cement Cladding
COLOURS:	1041 Linen / Texture: Raw
INSTALLATION:	Rivet Fix



Tested to BS8414 & BR135 compliant

The new build East Park Student Accommodation off Rennes Drive in Exeter offers almost 1,200 high-quality student residences across 11 tower blocks set into the rolling Devon hill side of one of the most scenic university campuses in the UK comprising of woodlands, lakes and botanical gardens.

With a sloping site with an difference of 35m, the requirement to deliver a non-combustible façade suited for a project ranging from 3 through to 8 stories which blends in to the natural surroundings, the architects, Stride Treglown in Bristol, specified over 16,000m² of Ceramapanel®.





CASE STUDY

GRAND PARK HOTEL, OSTERLEY

PRODUCTS:	VitraDual® - A1 Solid Aluminium Cladding
COLOURS:	9205 Champagne Metallic, 9308 Bronze Metallic, Blue RAL 5024
INSTALLATION:	Cassette fix

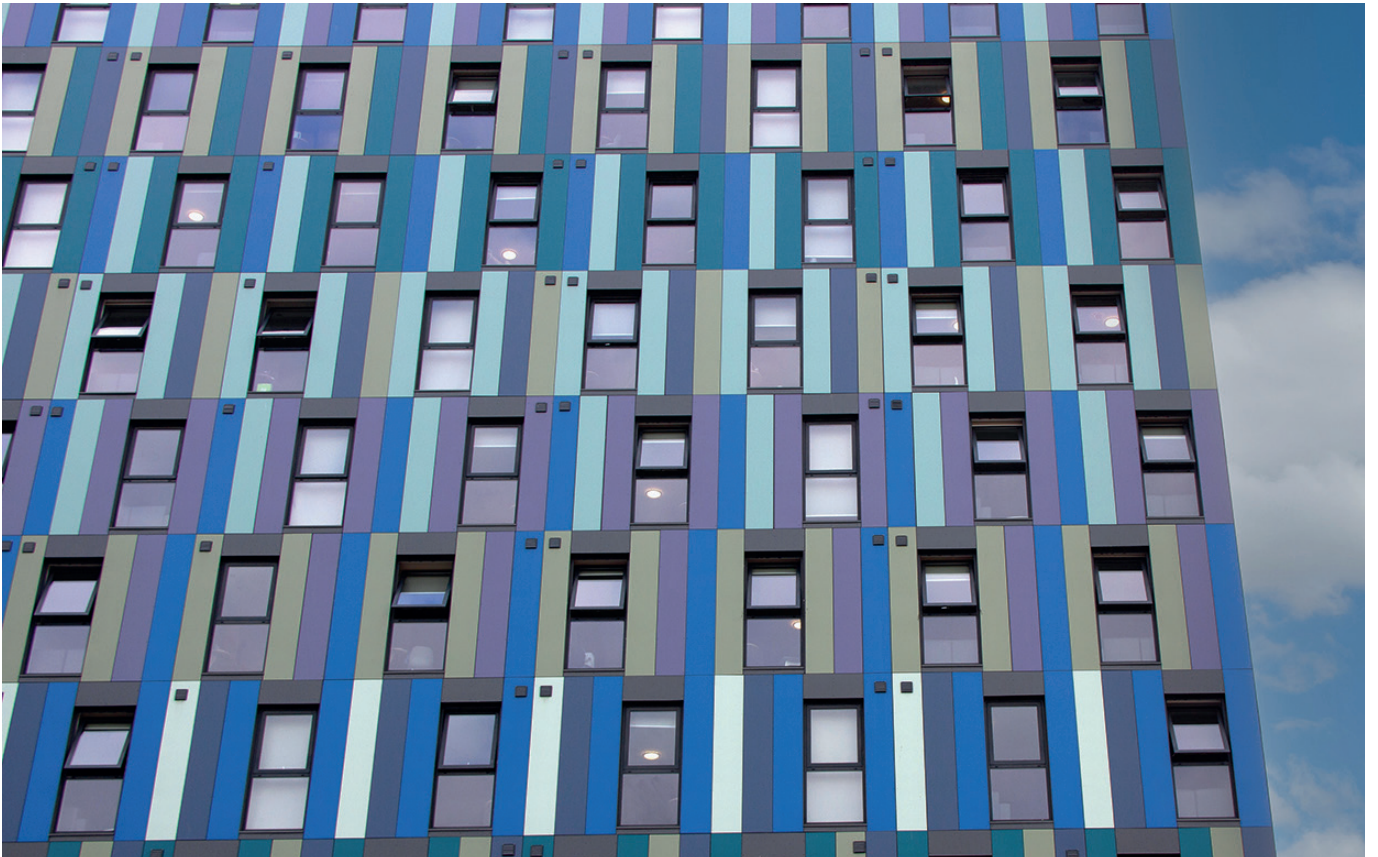


Tested to BS8414
& BR135 compliant

The Park Grand Hotel in Osterley was re-clad using VitraDual® to enhance and improve the fire ratings of the external façade,

Valcan's standard colour range Pantone custom colour were used to keep the aesthetics the same as the original building – colours chosen were 9205 Champagne Metallic and 9308 Bronze Metallic from the Metallics range and a custom colour of Blue RAL 5024.







CASE STUDY

IQ STUDENT ACCOMMODATION BRISTOL

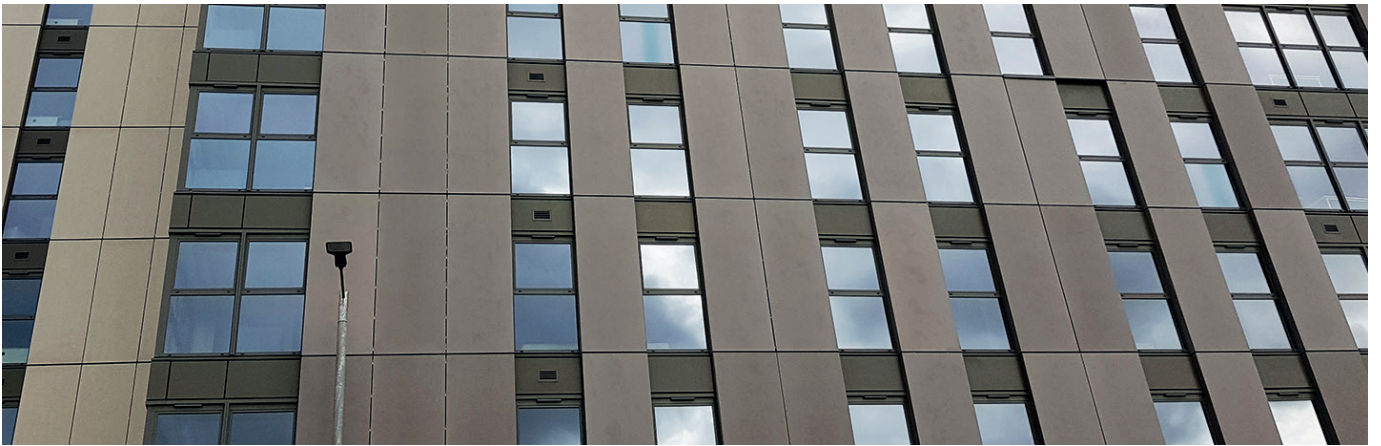
PRODUCTS:	VitraDual® - A1 Solid Aluminium Cladding
COLOURS:	Midnight Blue, Ocean Depths, Bleached Mint, Lapis Blue, Mint Green, Stormy Sky, Green Slate and Electric Blue



Tested to BS8414
& BR135 compliant

In a world where many buildings are made of concrete or brick, it's refreshing to see something different. The iQ student accommodation building used approximately 1000m² of sleek and eye-catching VitraDual® panels were used.

The 11-storey building's façade comes in an array of colours. There are 361 bedrooms in total, making iQ Bristol the perfect place for students to live and socialise together.



CASE STUDY LITTLE PATRICK STREET

PRODUCTS:	Ceramapanel® - A1 Fibre Cement Cladding
COLOURS:	2021 Pebble, 1041 Linen
INSTALLATION:	Secret fix



The new build student accommodation block on Little Patrick Street in Belfast was a £30m development consisting of 430 beds over 11 floors and completed by Graham Construction.

To create the natural aesthetics the architect, Fletcher Joseph chose to use Ceramapanel® in Natural Textures Raw 1041 Linen and Natural+ Textures Raw 2021 Pebble – the panels were secret fixed using the 12mm thick panels.





CASE STUDY VYNERS SCHOOL

PRODUCTS:	Ceramapanel® - A1 Fibre Cement Cladding
COLOURS:	2071 Fired Clay, 2081 Burnt Orange, 2101 Paprika
FINISH:	Natural+ Textures Raw
INSTALLATION:	Secret fix



Vyners School in the London Borough of Hillingdon was a new build project designed by Noviu Architects and constructed by Farrans.

A bright, vibrant and durable façade was required so the project used 1000m² of Ceramapanel® installed as secret fixed panels. For added protection, the colours were selected from the Natural+ range.

Valcan picked up the award for the best use of fibre cement cladding panels alongside Vivalda and Middlesex Façades at the Façade Awards 2020 for this project.







CASE STUDY

FULBOURNE ROAD, WALTHAMSTOW, LONDON

PRODUCTS:	VitraDual® - A1 Solid Aluminium Cladding
COLOURS:	9702 Bold Cream
INSTALLATION:	Face Fix



Tested to BS8414 & BR135 compliant

The residential development on Fulbourne Road in Walthamstow was a residential-led mixed-use development comprising of 125 dwellings and 5 commercial units split across 5 blocks on the 1 hectare site of the former Ensign Camera factory. The residential accommodation consists of 16 town houses and 109 flats including 11 units offering wheelchair access.

The architects appointed on the project created the defining characteristics using the brick bonding pattern and aluminium cladding system, however the project underwent remediation work to bring the external façade up to current building regulations, the original panel was replaced with VitraDual® to offer an A1 rated, non-combustible solution.



CASE STUDY

ADDINGTON VALLEY ACADEMY, CROYDON

PRODUCTS:	VitraFix and A1 Ceramapanel®
COLOURS:	Ceramapanel Natural Textures Raw 1031 Charcoal, 1091 Cappuccino, 1081 Hearth Brick
INSTALLATION	Face Fix



This 2,000+ m² project was a new build for a Special Free School in Croydon for children and young people with autism and learning difficulties.

Addington Valley Academy is a co-educational Special School with 150 places for children and young people aged 2-19 who have autism and social communication, cognitive, sensory and social, emotional, and behavioural needs in the Croydon region.

Valcan's A1 non-combustible cladding systems were reviewed and after working closely with the architects on the project, Ceramapanel® was specified installed back using our VitraFix® VF1 carrier system and colour matched fixing solutions.

Valcan and Eden Façades won the best use of fibre cement cladding panels at the Façade Awards 2022 for this project.



SUSTAINABILITY AT VALCAN: LEADING THE CHARGE FOR A GREENER FUTURE

We are committed to operating our business in an environmentally responsible manner. As a manufacturer and distributor of goods, we recognise the importance of reducing our carbon footprint and being conscious of our impact on the planet. Our mission is to drive a culture change within our industry, inspiring others to adopt more sustainable practices.

OUR VISION FOR A GREENER FUTURE:

At Valcan, our goal is to become a greener and more sustainable company by constantly evaluating and improving our operations. We aim to lead the charge in our industry by:

Continually researching and implementing innovative, sustainable manufacturing processes. Promoting responsible sourcing of raw materials and engaging with suppliers who share our commitment to sustainability.

Encouraging our employees to adopt sustainable practices, both at work and in their daily lives. Collaborating with industry partners to advocate for better environmental policies and standards.

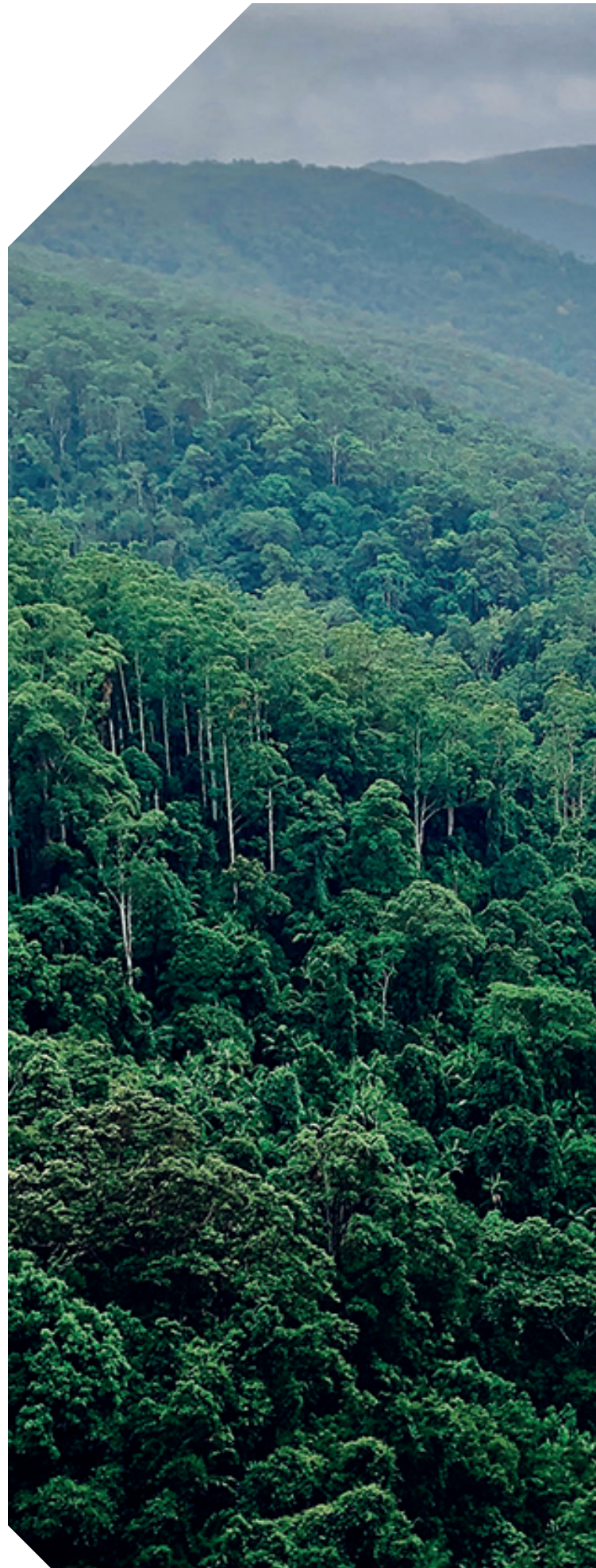
By taking these steps, we hope to create a positive impact on the environment and inspire others within our industry to follow suit. Together, we can build a more sustainable future for generations to come.

RECYCLING PROGRAM FOR ALUMINIUM PANELS:

We believe in the power of recycling and have implemented a recycling program for our VitraDual® aluminium panels. Customers can return old or damaged panels to us, and we will recycle the materials, ensuring that resources are utilised efficiently where waste is minimised.



Cert No: 16388





RE-PURPOSING ALUMINIUM PANELS INTO VITRAFIX® COMPONENTS:

In our pursuit of sustainability, we have developed an innovative process to re-purpose aluminium panels into parts for our VitraFix® range. By giving new life to these materials, we reduce waste and promote a circular economy.

CERMAPANEL® FULLY RECYCLABLE:

Ceramapanel fibre cement can be recycled completely, thanks to specialist companies that handle the waste material. They shred the surplus materials and mix them with other substances to create road surfaces, minimising the demand for new raw materials. This process helps reduce the need for extracting new raw materials, making it a sustainable choice for construction projects.

BUILDING A SUSTAINABLE FUTURE WITH OUR COMPLETE CLADDING SYSTEMS

By offering a comprehensive range of cladding components, we streamline the supply process, reducing deliveries and administrative tasks. This efficient approach significantly lowers our carbon footprint and supports our commitment to a greener future. With all essential elements included in our system, we minimise waste and promote resource efficiency.

We invite you to join us on our journey toward a more sustainable future. As a valued partner, customer, or stakeholder, your support is crucial to our mission. Let's work together to create a greener world and lead the way for a more responsible and sustainable industry.

CONTINUING PROFESSIONAL DEVELOPMENT (CPD)



Join our free cladding CPD presentations online or face to face at your premises.

Our popular CPD focuses on fire safety for buildings over 11m high.

CPDs last approximately 1 hour including a round of questions and answers at the end.

This provides a fantastic learning opportunity for architects, installers and construction professionals in the UK.

Topics explained are:

- ▲ Introduction To Valcan
- ▲ Rainscreen Cladding Overview - How It Works
- ▲ Fire Regulations - ADB Vol 2 Amendments
- ▲ How These Amendments Affect Your Project
- ▲ How To Comply Following The Ban On Combustible Cladding
- ▲ BS EN13501-1 Classification Explained
- ▲ The Difference Between A1 / A2 classifications
- ▲ The Golden Thread
- ▲ The Building Safety Act 2022
- ▲ Testing Options
- ▲ Valcan Solutions - Fibre Cement, ACM and Aluminium etc.
- ▲ Case Studies
- ▲ Questions and Answers Session

Book your place

Get in touch with us today and we'll arrange the best date/time:



Call: 01278 428245
Email: enquiries@valcan.co.uk
Website: www.valcan.co.uk/cpd



Pictured: Streamlight, London | VitraDual®

ON-SITE TOOLBOX TALKS

In our pursuit of fostering a cultural change in the industry, we stand at the forefront as advocates for implementing Dame Judith Hackitt's Golden Thread Principles. Our aim is to empower clients who choose Valcan products to embrace these principles effectively.

To ensure that our standards remain uncompromised, we kindly request that all installers take part in a Toolbox Talk and provide tangible proof of operating a professionally managed business. This encompasses aspects such as accurate pricing, efficient project completion, and the ability to offer a comprehensive package to clients.

Support and guidance will be provided on:

- Valcan products and systems including VitraFix®, VitraDual® and Ceramapanel®
- Fabrication Techniques
- Installation Methods
- General Housekeeping
- Questions and Answers



To arrange a Toolbox Talk get in touch with us by speaking to your contact directly, alternatively, call us on 01278 428 245, email us at enquiries@valcan.co.uk or scan the QR code and we'll get you registered for a session.





VALCAN

The Defining Standard



Certificate number: 16388
ISO 9001
ISO 14001

T: 01278 428 245
E: enquiries@valcan.co.uk
W: www.valcan.co.uk

Dunball House,
Woodlands Court Business Park,
Bristol Rd,
Bridgwater, Somerset
TA6 4FJ